



INFORMATION SHEET FOR NEW LANDOWNERS / NEW WELL OWNERS IN THE CUYAMA BASIN

PUMPING RESTRICTIONS

- Pumping restrictions are currently only planned in the central portion of the basin Management Area (MA) and its boundary will be defined during the upcoming fiscal year (July 1, 2021 through June 30, 2022). See page 2 for a preliminary map of the MA boundary.
- The MA boundary is determined by a model that calculates areas that experience a groundwater level decline of more than 2 feet per year over a 50-year period.
- Therefore, areas not currently in an MA could become subject to pumping restrictions if water use in an area meets the MA criteria. Development of MA policies are planned to occur during fiscal year 21-22.
- For landowners in the MA, pumping restrictions are set to *begin* in **2023** (5% of the deficit) and *peak* in **2038** (roughly 6.5% per year until 2039).

GROUNDWATER EXTRACTION FEES

- To fund the ongoing administration and implementation of a Groundwater Sustainability Plan, the Cuyama Basin Groundwater Sustainability Agency (CBGSA) established a groundwater extraction fee that applies to ***all*** groundwater extractors in the Cuyama Basin whose boundary is defined by the California Department of Water Resources' Bulletin 118.
- Fees are administered annually and cover the CBGSA's fiscal year budget (Jul 1-Jun 30).
- The Fiscal Year 2020-2021 fee is **\$44** per acre-foot (AF) of water.
- However, de minimis users are not required to pay (commercial use = 1.5 AF or less, and non-commercial use = 2 AF or less annually).
- Visit cuyamabasin.org to view the fee report.

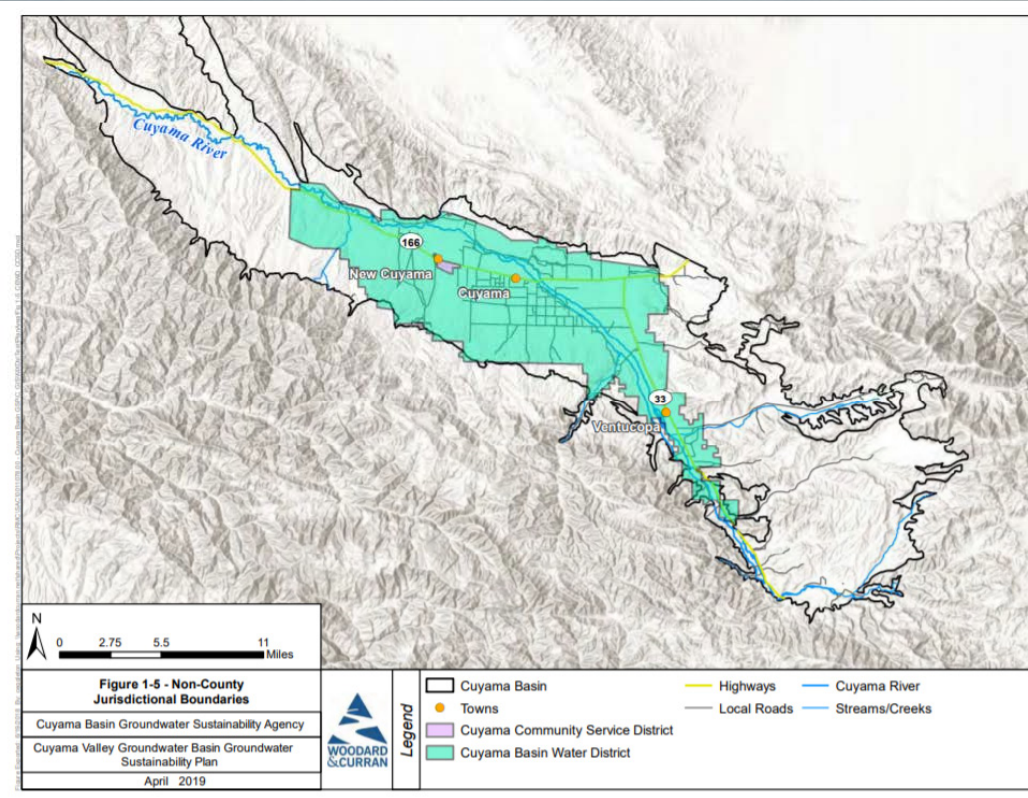
ABOUT THE CBGSA

- Governed by an 11-member Board with representatives from Kern, San Luis Obispo, Santa Barbara and Ventura counties, the Cuyama Basin Water District, and the Cuyama Community Services District (see map on page 2).
- Advised by a 7-member Standing Advisory Committee (SAC).
- Board meetings typically occur every other month on the first Wednesday of the month at 4 p.m. and the SAC meeting occurs the preceding Thursday at 4 p.m.
- Visit cuyamabasin.org for more info.

For more information, please visit cuyamabasin.org.

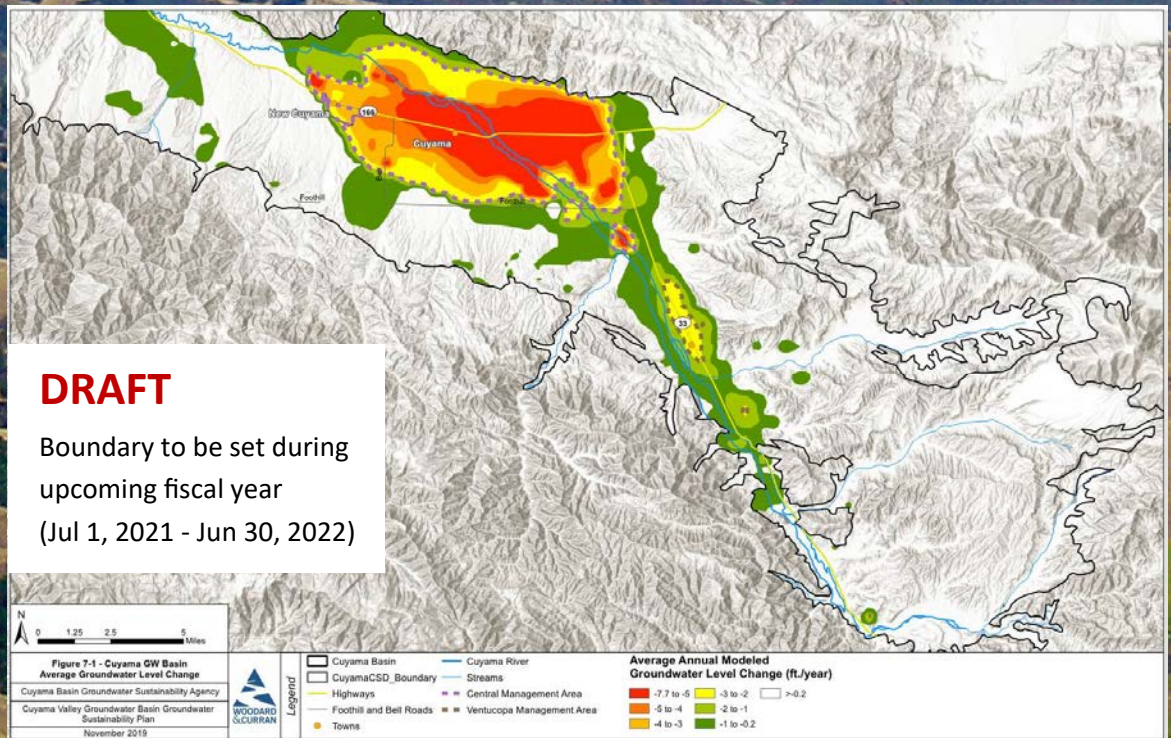
For questions, please contact Taylor Blakslee at (661) 477-3385 or tblakslee@hgcpm.com

NON-COUNTY JURISDICTIONS IN THE CUYAMA BASIN



- The Cuyama Basin Water District (CBWD) is represented on the Cuyama Basin Groundwater Sustainability Agency Board of Directors.
- The CBWD is funded by a tiered, acreage-based assessment and these fees are separate from the Cuyama Basin Groundwater Sustainability Agency groundwater extraction fees.
- The Cuyama Community Service District is represented on the CBGSA Board and provides a municipal water supply for the townsite of New Cuyama.

PRELIMINARY MANAGEMENT AREA BOUNDARY



DRAFT

Boundary to be set during upcoming fiscal year (Jul 1, 2021 - Jun 30, 2022)