

**Cuyama Basin Groundwater Sustainability Agency**

---

# SGMA Educational Item: Management Actions and Projects

---

**August 30, 2018**



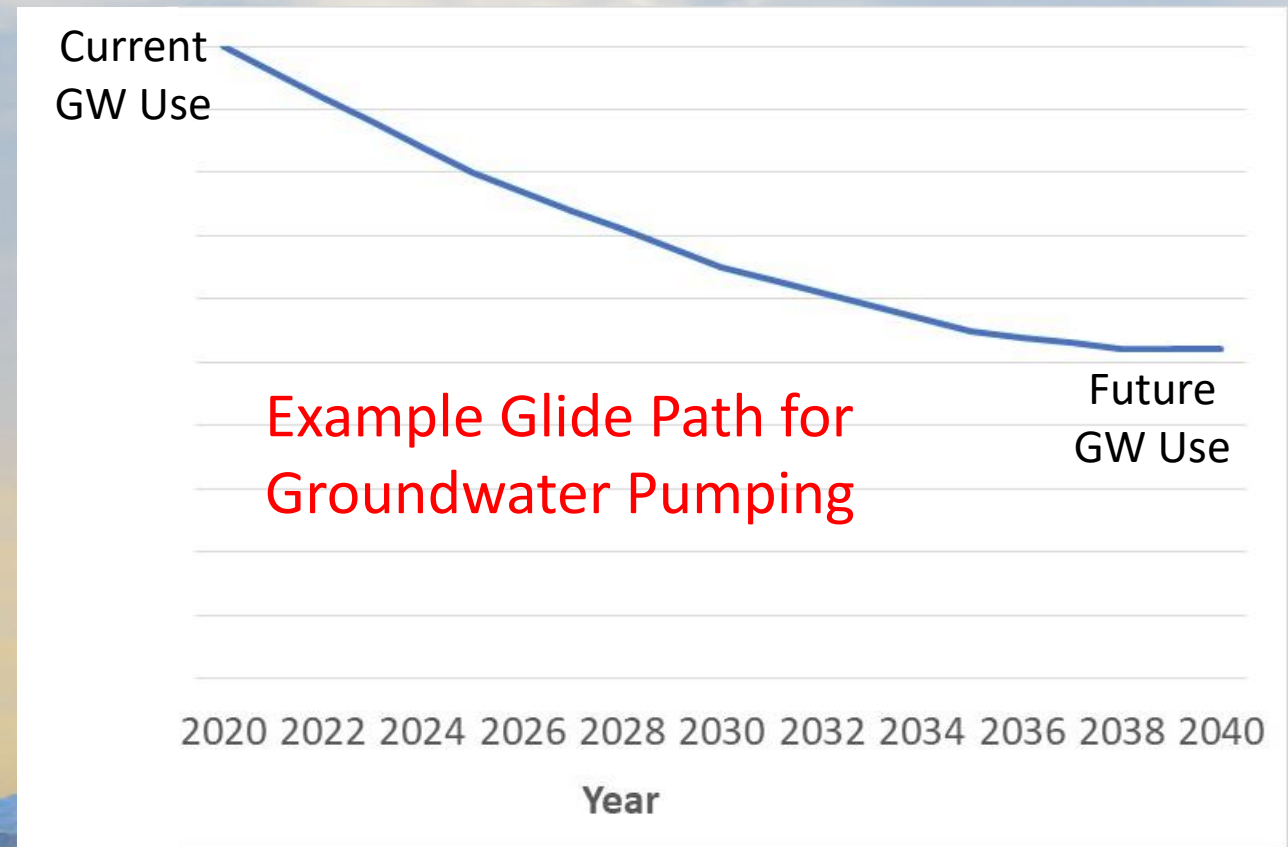
# Projects and Management Actions to Close the Gap Between Water Supplies and Demands

- Water supply projects to increase available supplies
- Management actions to reduce groundwater demands
- Adaptive management to respond to changes in supplies and demands over time



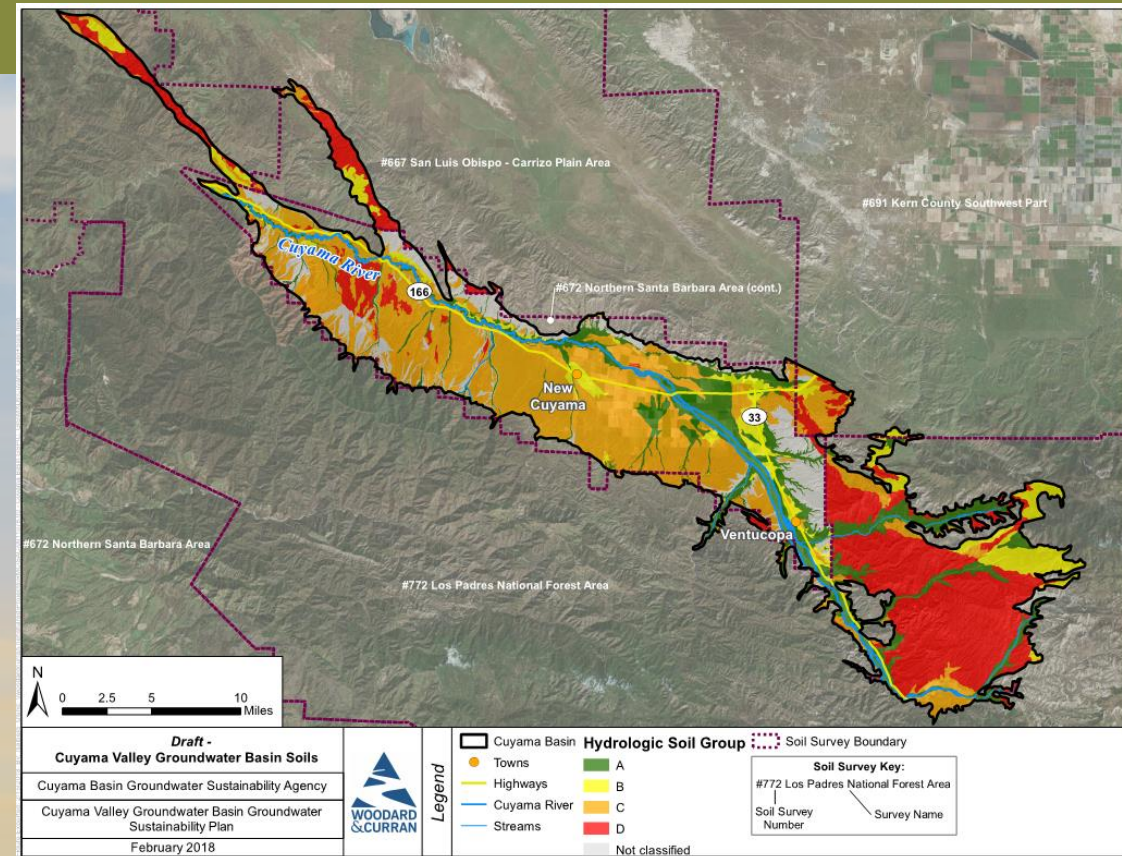
# Potential Demand Management Actions

- Potential components of a demand management approach:
  - Pumping restrictions/allocations
    - Water accounting
    - Water metering
  - Water market
  - Fees
    - By pumping amount or acreage
  - Glide path



# Potential Water Supply Projects

- Storm and Flood Water Capture Projects
  - Capture excess flood flows and recharge into aquifer
  - Select recharge locations selected based:
    - soil properties
    - Current groundwater conditions in local area
- Available water for recharge limited by downstream water rights



# Potential Water Supply Projects

- Water Supply Imports/Exchanges

- Purchase water & transport in Coastal Aqueduct

- Exchange at Twitchell to allow for greater floodwater capture upstream

- Other water import/exchange possibilities?

In-lieu exchange

